

A UNIVERSE of Stories

SUMMER READING PROGRAM FOR KIDS!

Check off each day on the calendar below that you read for at least 20 minutes. For every 10 days you mark, you will earn a prize that you can pick up at any library location!

MAY

SUN	MON	TUE	WED	THU	FRI	SAT
START!						
	28	29	30	31		

JUNE

SUN	MON	TUE	WED	THU	FRI	SAT
						1
2	3	4	5	6	7	8
9	10	11	12	13	14	15
16	17	18	19	20	21	22
23	24	25	26	27	28	29
30						

JULY

SUN	MON	TUE	WED	THU	FRI	SAT
	1	2	3	4	5	6
7	8	9	10	11	12	13
14	15	16	17	18	19	20
21	22	23	24	25	26	
END!						

NAME _____

Register for the Summer Reading Program online or at any Wichita Public Library location from May 28 to July 19. The Summer Reading Program ends July 26. wichitalibrary.org/summerreading



Stop by for programs designed just for you all summer long!

Visit your neighborhood Library location or visit wichitalibrary.org for a complete list of events.

Advanced Learning Library

711 W. 2nd St.
(316) 261-8500

Alford Branch

3447 S. Meridian
(316) 337-9119

Angelou Northeast Branch

3051 E. 21st St.
(316) 688-9580

Evergreen Branch

2601 N. Arkansas
(316) 303-8181

Linwood Park Branch

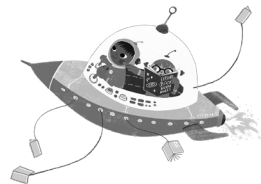
1901 S. Kansas
(316) 337-9125

Rockwell Branch

5939 E. 9th
(316) 688-9361

Westlink Branch

8515 Bekemeyer
(316) 337-9456



Leemos Todos Juntos

En el otro lado de este papel, marque cada día en el calendario cuando lea por lo menos 20 minutos. ¡Por cada 10 días que lees, ganarás un premio que pueden recoger en cualquier biblioteca pública de Wichita!

Visítenos durante el verano para participar en nuestras actividades especiales.



CONNECT WITH THE LIBRARY:

@WichitaPublicLibrary @WichitaLibrary @WichitaLibraryOrg

For more information about Library programs and events, visit wichitapubliclibrary.org.

The Wichita Public Library is a service of the City of Wichita.